

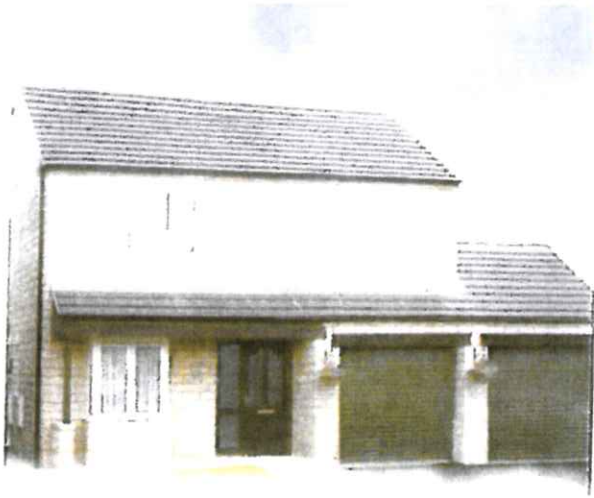
# BARNBY

No. of Bedrooms - 4

Garage Type - Double

Floor Space - 1263 SQ. FT.

Width of Plot - 11.856 M



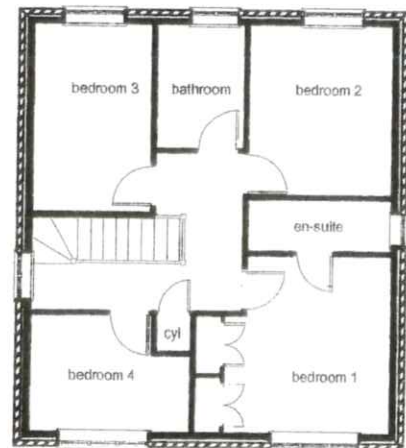
	metric		imperial		notes
	mm	mm	ft	in	
<b>Ground Floor</b>					
Lounge	5250	x 3550	17 3	x 11 8	
Dining Room	2950	x 2450	9 8	x 8 0	
Kitchen	4650	x 2550	15 3	x 8 4	max
Utility	2450	x 1650	8 0	x 5 5	max
Cloak	2450	x 860	8 0	x 2 10	plus alcove
<b>First Floor</b>					
Master bedroom	3500	x 3900	11 6	x 12 9	max
Ensuite	2850	x 980	9 4	x 3 3	
Bedroom 2	3350	x 2850	10 12	x 9 4	
Bedroom 3	3650	x 2350	11 12	x 7 8	
Bedroom 4	3150	x 2250	10 4	x 7 5	max
Bathroom	1700	x 2400	5 7	x 7 10	
<b>Garage</b>					
garage 1	4250	x 2550	13 11	x 8 4	
garage 2	5300	x 2700	17 5	x 8 10	



Ground Floor  
Scale 1/150



First Floor  
Scale 1/150



1 Heron Court, MerlIn Way, Quarry Industrial Park  
Ilkeston, Derbyshire  
Tel: 0115 932 6531 Fax: 0115 944 6701  
On line at [www.fairgrove.co.uk](http://www.fairgrove.co.uk)

DRAWN	D.HERBERT	SCALE 1/100 & 1/150	
CHECKED		DRAWING No.	REV.
DATE	17.11.05	A4/BAR/005	