

ADDINGHAM

No. of Bedrooms - 4

Garage Type - Attached

Floor Spce - 1528 SQ. FT.

Width of Plot - 10.580 M

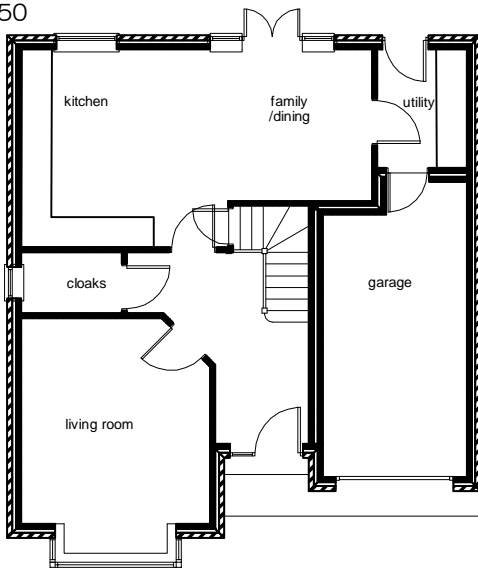


	metric		imperial				notes
	mm	mm	ft	in	ft	in	
Ground Floor							
Lounge	3750	x 4050	12	4	x 13	3	plus bay
Kitchen/Dining	6955	x 3925	22	10	x 12	10	max
Utility	1775	x 2353	5	10	x 7	9	
Cloaks	2000	x 1200	6	7	x 3	11	
First Floor							
Master bedroom	3750	x 4837	12	4	x 15	10	max
Ensuite	1850	x 1720	6	1	x 5	8	
Bedroom 2	3030	x 4328	9	11	x 14	2	
Bedroom 3	3030	x 4050	9	11	x 13	3	
Bedroom 4	3050	x 4462	10	0	x 14	8	

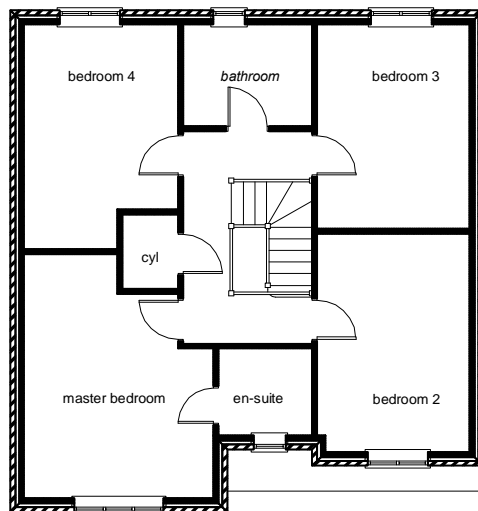


Scale 1/150

Ground Floor
Scale 1/150



First Floor
Scale 1/150



1 Heron Court, Merton Way, Quarry Industrial Park
Ilkeston, Derbyshire
Tel: 0115 932 6531 Fax: 0115 944 6701
On line at www.fairgrove.co.uk

DRAWN	D.HERBERT	SCALE 1/150	
CHECKED	D.STACK	DRAWING No.	REV.
DATE	08.03.06	A4/ADD/021	A